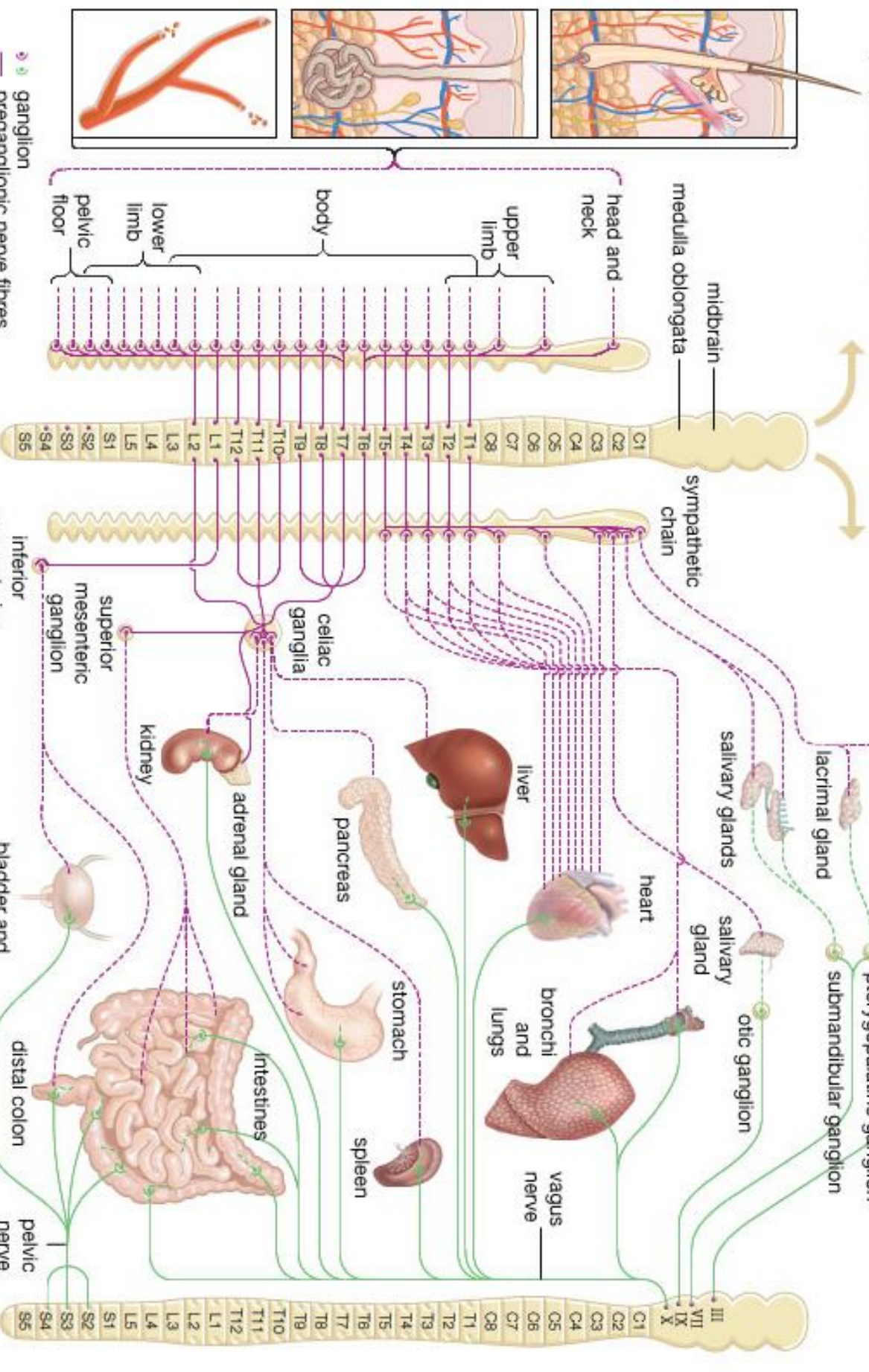


## Sympathetic nervous system

sympathetic outflow to smooth muscle of hair follicles, sweat glands, and peripheral blood vessels

sympathetic outflow to organs of the head and trunk



## Parasympathetic nervous system

● ganglion  
 — preganglionic nerve fibres  
 - - - postganglionic nerve fibres

spinal cord

inferior mesenteric ganglion

superior mesenteric ganglion

bladder and external genitalia

distal colon  
 pelvic nerve  
 spinal cord